

Eugenia, Eugenia Lake and Beaver Valley

Eugenia and Eugenia Lake:

Eugenia is a Secondary Settlement Area in the Municipality of Grey Highlands located along Grey Road 13 north of 8th Concession. Eugenia is directly south of Kimberley and north-west of Flesherton. Eugenia Lake is an Inland Lakes and Shoreline community located to the east of Eugenia surrounding Eugenia Lake, which outlets to the Beaver River which flows north into Georgian Bay. The population of both communities combined is estimated at between 500 and 750 people, with a significant seasonal population. Growth in Eugenia is expected to be limited to infill development.

Eugenia does not currently have municipal water or wastewater services. Providing municipal services to Eugenia was identified as Phase 3-1 of the Master Servicing Plan (2017), and Eugenia Lake was included in Phase 3-2.

Eugenia Settlement Area is approximately 246 ha, of which 100 ha are considered “Built Up Area” and includes residential and business lands. Eugenia Lake community as an Inland Lakes and Shorelines designation includes primarily residential with a few business lands, and is approximately 140 ha, of which 59 ha are considered “Built Up Area.”

Beaver Valley:

Beaver Valley includes Escarpment Recreation Lands near the Beaver Valley Ski Resort and Rural Residential Lands along Grey Rd 30. Beaver Valley is south of Kimberley, and east of Markdale. It is located to the west of the Beaver River which flows west and then north into Georgian Bay. Although the population was not recorded separately in the 2021 census, it is estimated at around 250 permanent residents and around 400 seasonal residents. Growth in Beaver Valley is expected to be infill of residential lands. Residential areas within the Beaver Valley area are approximately 184 ha.

Some parts of Beaver Valley have communal servicing, and the rest have private services. Providing municipal services to Beaver Valley was identified as Phase 1-3, and municipal servicing to Rural Residential lands along Grey Road 30 as Phase 1-4 of the Master Servicing Plan (2017).

Description of Local Services:

Eugenia:

Drinking Water:

Approximately 285 Private Wells

Wastewater:

Approximately 285 Private Sewage Systems

Eugenia Lake:

Drinking Water:

Approximately 400 Private Wells

Wastewater:

Approximately 400 Private Sewage Systems

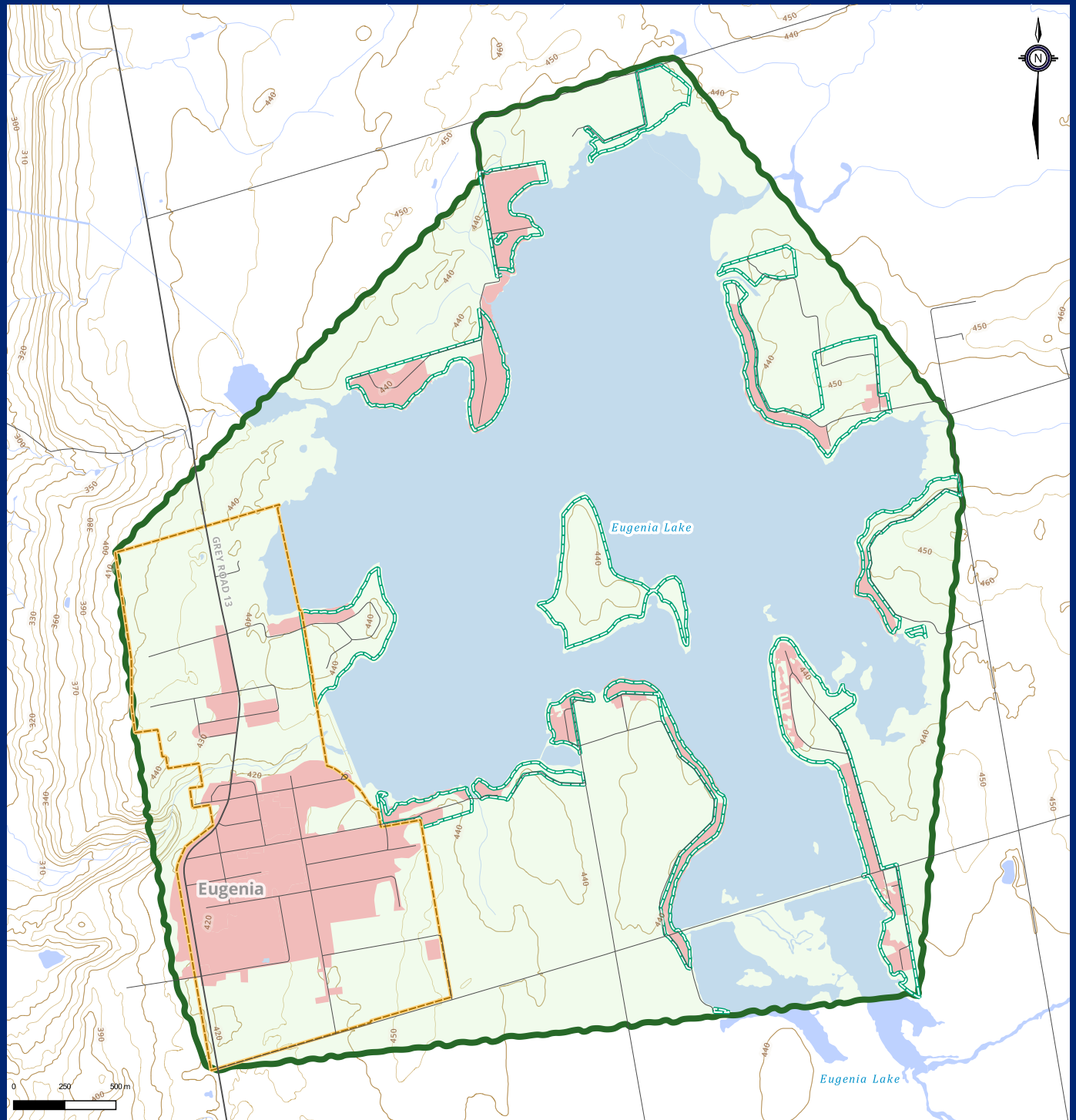
Beaver Valley:

Drinking Water:

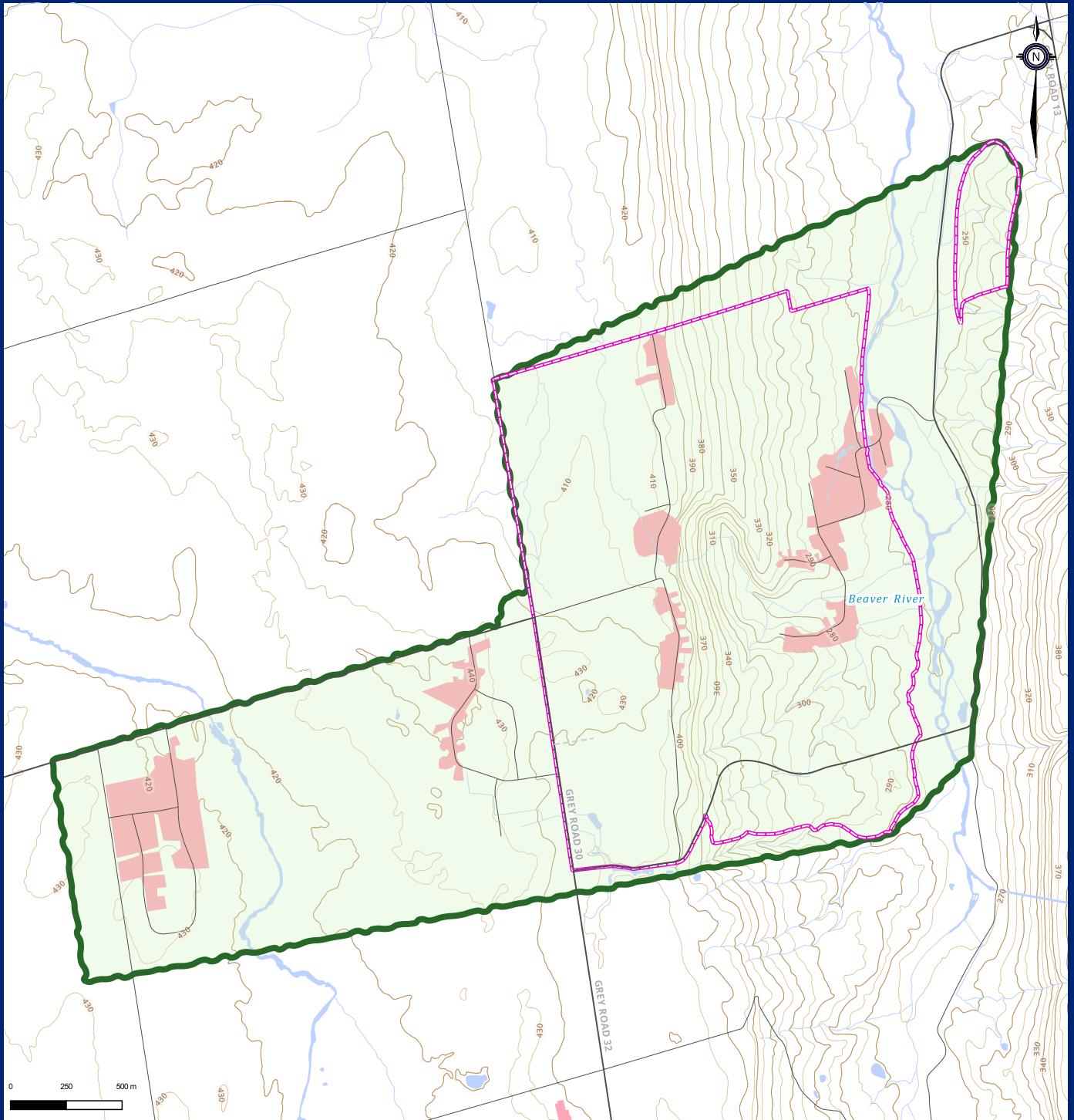
Approximately 80 customers on communal services, approximately 200 Private Wells

Wastewater:

Approximately 80 customers on communal services, approximately 200 Private Sewage Systems



Road Centerline	Contours	Land Use Designations	Municipal Services Available
— Arterial	— 20m	— Inland Lakes & Shoreline	— None
— Local	— 10m	— Settlements	— Waterbody
— Waterway	— Built-up Area	— Secondary	



Road Centerline	Contours	Land Use Designations	Municipal Services Available
— Arterial	— 20m	▭ Escarpment Recreation Area	— None
— Local	— 10m		— Waterbody
— Waterway	■ Built-up Area		