

Markdale

Description Of Location:

Markdale is the only Primary Settlement Area in the Municipality of Grey Highlands, and the only fully municipally serviced community. Markdale is located at the intersection of Highway 10 and Grey Road 12. It is located near the head waters of the Rocky Saugeen River, which flows westwards to join the Saugeen River and ultimately into Lake Huron. A population of 1206 was recorded in the 2021 Census, a small decrease from 1216 in the 2016 Census. As identified in the Municipality of Grey Highlands Official Plan, development is directed to Markdale and Flesherton, although the majority of development and growth is expected in Markdale as the only fully serviced community.

Improvements to Markdale's municipal services were identified as Phase 1 of the Master Servicing Plan (2017), including an increase in drinking water storage and expansion of the wastewater treatment system. A new water tower was constructed in 2021 and improvements to the wastewater treatment system are ongoing (spring of 2024).

Land Area and Use

Markdale Settlement Area is approximately 361 ha, of which 173 ha are considered "Built Up Area." Markdale includes residential and business lands, as well as institutional lands including a public school and a hospital.

Description of Local Services:

Drinking Water:

Services provided to 722 customers (connections).

- Two Water Treatment Pumping Stations (WTP) supplied by three (3) wells
 - o Total system capacity is 5,990 m³/day
 - o Pump Station 1 on Isla Street draws raw water from Well #1
 - o Pump Station 2 on Eliza Street draws raw water from Wells #3 and #4,
- One Water Tower with a volume of 2,900 m³ adjacent to PS2 and Wells #3 & #4.
- Approximately 77 hydrants

Wastewater:

Services provided to 700 customers (connections).

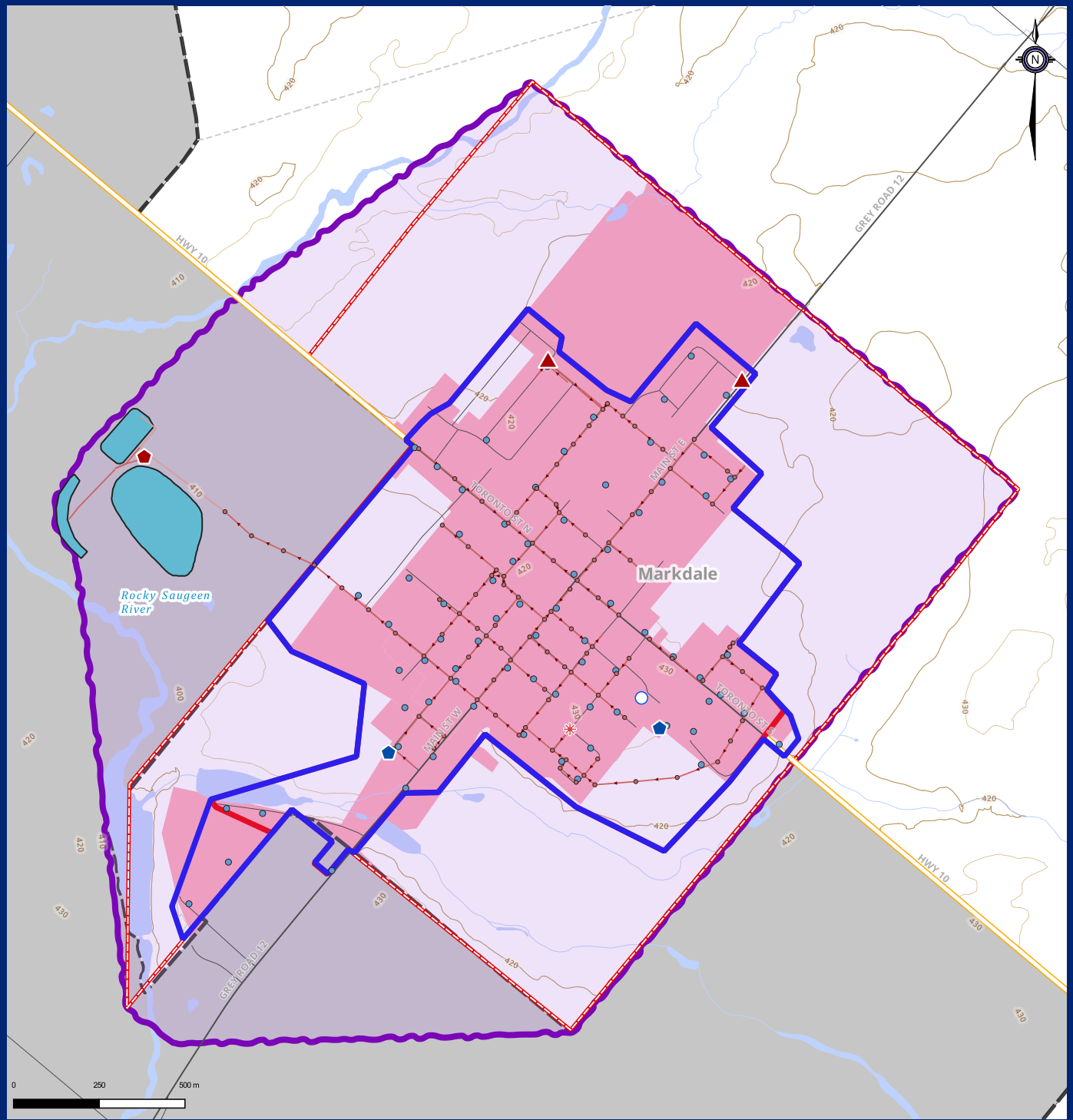
- One Wastewater Treatment Plant (WWTP) located at the northwest edge of the community
 - o Average Day Capacity: 1,722 m³
 - o Consists of two lagoons, of which the first one provides settling and aeration, and the second provides further treatment, followed by a series of eight (8) rapid infiltration basins
- Two Sewage Pumping Stations (SPS) in the northeast, located on Greyview Drive and County Road 12
- More than 9.4 km of gravity main
- More than 132 manholes, 1 cleanout

Pockets of properties within the community are understood to be on private wastewater services.

Capacity Review and Proposed Developments:

The average daily water demand over the past three years was approximately 1,208 m³ and the maximum day water demand was 2,619 m³. The WTPs have been operating at approximately 44% of capacity. The average daily wastewater flow was approximately 793 m³ between 2020 and 2022. The WWTP has been operating at 46% of capacity.

A total of eleven (11) developments are planned to be connected to municipal services in Markdale. Four committed developments have a total of 374 Equivalent Residential Units (ERUs). Seven developments in the application process have a total of 881 ERUs. Combined, all proposed developments total 1255 ERUs. It is estimated that providing services to these developments will result in the WTPs operating at 81% capacity, with 19% capacity remaining and the existing capacity of the WWTP would be exceeded. Expansion of the WWTP is currently underway with a proposed final capacity of 2,575 m³. All proposed developments will result in the WWTP operating at 87% capacity, with 13% capacity remaining.



Facilities

- WWTP
- Water Tower
- WTP
- Wastewater Infrastructure
- * Cleanout
- ▲ Lift Station
- Manhole

- Hydrant
- Wastewater Main
- Road Centerline
- Arterial
- Highway
- Local
- Waterway

Contours

- 20m
- 10m
- WWTP Features
- Built-up Area
- Extents of Servicing
- Wastewater
- Water

Settlements

- Primary Municipal Services Available
- Water and Wastewater
- Waterbody